

4,852 SQ. FT.

need third party as-builts

3,714 SQ. FT.

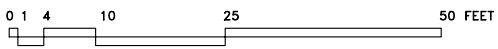
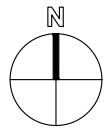
need third party as-builts

elevator machine room

AVAILABLE  
4,584 SQ. FT.  
(3,885 USABLE SQ. FT.)

AVAILABLE  
1,025 SQ. FT.  
(869 USABLE SQ. FT.)

4,459 SQ. FT.



# Four Oaks Place

CENTRAL TOWER  
1330 POST OAK  
FLOOR 13  
SPRINKLERED  
12/17/18 PAGE 2